

Moorings 4000 3 Cabins

Specifications and Equipment List - Moorings Upgrades In Bold

SALOON/INTERIOR

- Laminate finish with solid wood trims
- Wear resistant simulated wood flooring
- L-shaped settee seating
- Saloon table - convertible to double bunk c/w cushions
- LED overhead lighting
- Ventilation through forward facing portlights and watertight door
- Stowage space under settee cushions
- Forward access to foredeck complete with watertight saloon access door
- Access to aft cockpit through sliding door/window
- Chart table seat faces forward with upholstered ottoman which can be used as extra saloon table seating

GALLEY

- Corian® galley worktop surfaces
- Single lever mixer faucet with pull-out sprayer
- Single bowl stainless steel sink
- Dish and cutlery drying recess with drainage and cover
- Vitrefrigo 2-drawer fridge/freezer 56USgal / 212L 12v
- 3-burner gas hob & oven
- Gas solenoid shut-off valve with control at switch panel & warning light at cooker
- Separate garbage bin locker
- Stowage space in shelf lockers
- Stowage space under floorboards
- Pot drawer under oven
- 4 x Drawers alongside oven
- Outboard galley shelf with provision for microwave

NAVIGATION CONSOLE

- Chart table with stowage locker under hinged lid
- LED overhead lighting
- Stainless steel backrest railing

CABINS x 2

- Laminate finish with solid wood trims
- Wear resistant laminate flooring
- Double berths: Forward bunks (57in / 1.45m x 82in / 2.10m)
- Double berths: Aft bunks (58in / 1.48m x 80in / 2.02m)
- Hanging locker with lower shelf
- LED overhead lighting and reading lamps
- Overhead roller blinds for privacy in combination with roller bug screens
- Large open shelves
- Stowage drawers under bunk
- Large hull window incorporating portlight and pleated blind
- **Berth in port bow to accommodate children complete with foam mattress and access from forward cabin**
- Double USB sockets

HEAD COMPARTMENT

- Washbasin with basin mixer and Corian® worktop
- Under-basin locker with toilet roll holder
- Vanity locker with mirror
- Double towel rail and ring
- Sliding head door with coat hook
- Dedicated trash can locker
- Shower sump with automatic drainage system
- LED overhead lighting
- Overhead roller blinds for privacy in combination with roller bug screens
- **Electric flushing toilet**
- Shower compartment complete with lever mixer and adjustable shower rose

OWNER CABIN

- Laminate finish with solid wood trims
- Wear resistant laminate flooring
- Double berth (58in / 1.48m x 80in / 2.02m)
- 1 x Full height hanging locker
- 1 x Full height shelf locker
- Vanity table/desk with stowage locker under lid and upholstered ottoman
- Fold up vanity mirror
- Drawer unit with 3 x drawers
- Stowage drawers under bunk
- Sliding entrance door with lock
- LED overhead lighting and reading lamps
- Overhead roller blinds for privacy in combination with roller bug screens
- Large hull window incorporating portlight and pleated blind
- Double USB sockets

OWNER CABIN HEAD COMPARTMENT

- Large washbasin with single lever mixer and Corian® worktop
- Under-basin locker with toilet roll holder
- Separate shower compartment with divider complete with lever mixer and adjustable shower rose
- Shower sump with automatic drainage system
- **Electric flushing toilet**
- Double towel rail, hook and ring
- Vanity locker with mirror
- Dedicated trash can locker
- Overhead roller blinds for privacy in combination with roller bug screens

DECK & HULL

- Gas cylinder regulator in dedicated cockpit LPG locker
- Guardwires with stanchions, bases, port & starboard side gates
- Guardwires across bow and stern
- 1000w vertical windlass 10mm chain gypsy with handheld remote
- Anchor bow roller fitting
- Anchor chain stopper
- Liferaft locker with convertible fore/aft seat bolster in aft cockpit
- Sliding companionway door/window
- Hardtop over cockpit complete with LED lighting
- Hardtop bimini over helm with supports and LED lighting
- Folding swim ladder with five teak steps
- Cockpit table
- Trampoline
- Helmseat with upholstered backrest
- Horseshoe buoy with holder
- Acrylic smoke grey tinted windows
- Hardtop supports
- Side window brows
- 2 x Size 10 flush hatches over heads
- 4 x Size 44 flush hatches over cabins
- 1 x Size 70 flush hatch over cockpit
- 2 x Size 5 portlights in windscreen
- 8 x Size 1 portlights in hull side and transom
- Compass at helm position
- 1 x Anchor chain bin
- 1 x Anchor/windlass locker
- 3 x Foredeck lockers
- 2 x Pulpits with seats
- 2 x Pushpits
- 2 x Coachroof handrails
- 2 x Hardtop grab handrails
- 2 x Transom grab handrails
- 9 x 260mm mooring cleats
- Drink holders (2 x in forward stairwell / 4 x in aft cockpit/helm)
- **Removable helmseat spray dodger**
- **Coach roof side window removeable shade covers**
- **Custom davit system (stainless steel) with electric winch**

MAST, RIGGING & SAILS

- Rope locker at helm
- Natural anodized mast and boom
- Natural anodized crossbeam with mooring cleats
- Mainsail full battened with 2 rows reefs
- 120% Furling genoa
- Genoa furler
- 1 x Furler jammer on side deck
- Bridle mainsheet system (3:1 purchase)
- 1 x Mainsheet (3:1 purchase)
- 2 x Genoa sheets
- 3 x Halyards (main, genoa & spare)
- 1 x Manual winch
- **1 x Electric winch at helm station with foot activator switch**
- 1 x Winch handle pocket at helm
- 2 x Winch handles
- 2 x Genoa cars with pin stop
- 2 x Genoa tracks
- 2 x Mainsheet clutch at helm
- 2 x Genoa clutch at helm
- 2 x Halyard clutch at helm (main & gennaker)
- 2 x Reef clutch at helm
- 1 x Clutch and cleat on mast for genoa halyard
- 4 x Padeyes to allow for gennaker tackle
- Wind indicator
- 2 x Additional spare 12v wires in mast
- Additional spare conduit with messenger in mast
- **Boom cover stackpack system**
- Rigid Boom Vang
- 2 x Single line reefs lead aft
- Main boom topping lift

RUDDER & STEERING SYSTEM

- Balanced spade rudders
- Rudder stock in F16ph stainless steel
- JP3 Self aligning bearings
- *Lewmar* chain-and-wire steering system complete with bulkhead steering unit and brake
- Destroyer-type steering wheel
- Stainless steel emergency tiller

ENGINE & CONTROLS

- Double lever throttle / gearshift control
- Sound deadening panels in engine room
- 2 x Engine room ventilation fans and ducting
- **2 x Yanmar 3YM30C 29HP diesel engines with sail drives**
- 2 x Propellers - 2-blade fixed
- 2 x Fuel deck fillers
- 2 x Fuel filter / water separators
- 2 x Fuel tanks 95USgal / 360L total capacity
- 2 x Exhaust skin fittings (stainless steel)
- 2 x Exhaust water anti-siphon locks
- 2 x Cooling raw water inlet strainers
- 2 x Exhaust cooling water temperature sensors with audible alarms at helm

ELECTRICAL INSTALLATION

- LED Courtesy lights at stairways
- Bi-color & stern navlights
- 12v DC switch panel
- 1 x 12v Outlet socket at the switch panel
- 2 x Fuel tank gauges at helm position
- 2 x Ammeters at helm position
- **2 x AGM 210Ah house batteries**
- **2 x AGM 100Ah engine starter batteries**
- **1 x Additional AGM 210Ah house battery**
- 1 x House battery isolator switch

- 2 x Engine starter battery isolator switches
- 2 x Alternators, standard with engines
- 1 x Electrical spares kit: fuses, relays, fuse holders
- **Raymarine Instrument Package: Includes Ray55 VHF & additional VHF handset at helm, p70 color autopilot display, a95 9" MFD with wifi capability, and i70 Colour instrument at helmstation, with retractable depth & speed, plus wind transducers**
- **110v or 220v hard wired shore cable, includes 1 heavy duty 30amp shore power line, AC switch panel, and AC double outlets in cabin, galley and at switch panel**
- **Fusion 700i series marine stereo in saloon with docking station, includes bluetooth, USB, and & AUX connectivity, Fusion marine speakers 2 x in saloon & 2 x in aft cockpit, 2 x on forward deck and wired remote control at helm station (1)**
- **Battery charger 60amp**
- **Ventilation fans in saloon (3) and one in each stateroom**
- **Northern Lights 6 kw Genset**
- **Cruisair Air conditioning (2) Total 32,000 BTU**
- **23" Flat Screen TV/DVD in Saloon Dual 110v / 220v combo**
- **2 x Solar Panels 70w each fitted to hardtop**
- **4 x USB ports in the saloon (2 x chart table - 2 x at switch panel)**
- **Microwave oven in galley**

PLUMBING INSTALLATION

- Hot and cold pressurized fresh water system
- 2 x Water tanks with total capacity 206USgal / 780L
- 1 x 3.5 GPM fresh water pressure pump with 1L accumulator tank
- 2 x Hot water tanks with total capacity 12USgal / 46L
- **Transom shower with hot and cold water mixer**
- 2 x Automatic shower drain pumps
- 2 x Holding tanks, total capacity 24USgal / 90L
- 2 x Electric bilge pumps (keel sump) with float switches and alarm at switch panel
- 2 x Manual bilge pumps (keel sump)
- 2 x High water bilge float switches with alarm at switch panel
- 2 x Electric bilge pumps (engine room) with alert at switch panel

GENERAL EQUIPMENT

- 6 x Fire extinguishers
- Owner's Operating Manual
- CE Certification
- NMMA Certification

DELIVERY & COMMISSIONING

- **Transport to Cape Town Harbor, launching and stepping of mast, installation of sails and rigging, commissioning of equipment and sea trials**
- **Antifouling Paint**
- **Delivery from Cape Town to charter port**

SAFETY GEAR

- **45lb (20 kg) Delta anchor with 150ft (50m) of chain**
- **35lb (15kg) Britany anchor with 26ft (8m) of chain and 200ft (61m) warp**
- **Anchor bridle, shackles and hook**
- **6 x Fenders**
- **4 x Mooring lines 18mm (70in) x 10m (32ft 10in)**
- **2 x Spring lines 18mm (70in) x 15m (49ft 2in)**
- **8 x Life jackets**
- **Safety harnesses**
- **Bell**
- **Flare Kit**
- **Binoculars**
- **Navigation tools: Parallel rule, compass, dividers**

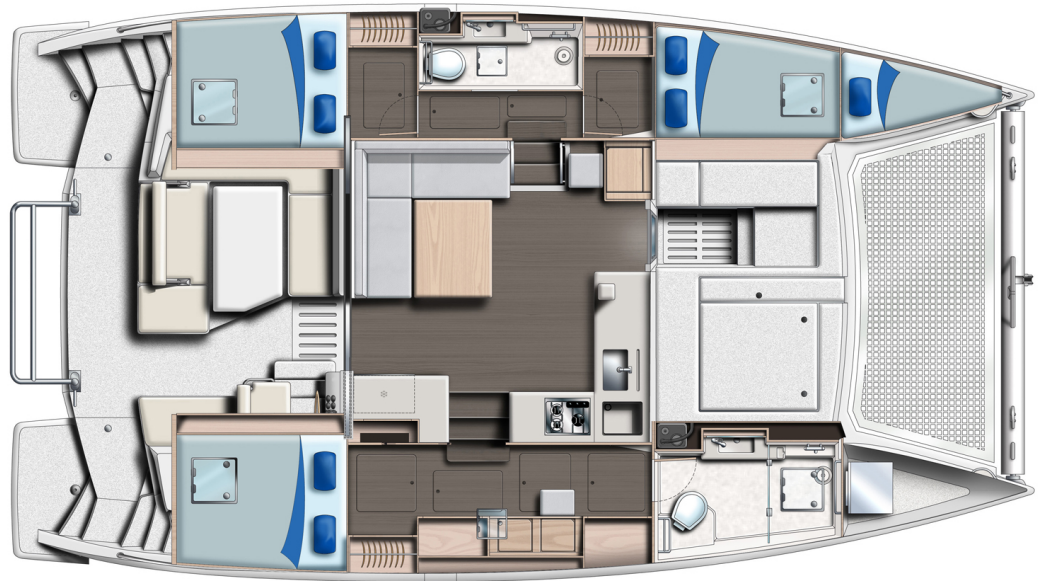
CRUISING GEAR

- **Plates, cups, saucers, glasses for eight (8)**
- **Bed linens for eight (8)**
- **Flatware for eight (8)**
- **Pots, pans, miscellaneous food prep tools**
- **Cooking and serving utensils**

- **Coffee pot, tea kettle, toaster**
- **Snorkeling gear for eight (8)**
- **Towels and washcloths for eight (8)**

GENERAL SPECIFICATIONS

Length Overall: 11.99m/39ft 4in
Waterline Length: 11.62m/38ft 1in
Mast Height: 19.45m/63ft 10in
Beam: 6.72m/22ft 1in
Draft: 1.25m/4ft 1in
Displacement: 9340kg/20591lb
Fuel Capacity: 360L/95gal
Water Capacity: 780L/206gal
Sail Area: 96sqm/1032sqft
Engines: 2 x 29HP



The Builder reserves the right to change or amend the contents of this document at any time without prior notification to any third party, and no liability will be accepted for errors contained within the same.