

Moorings 514PC Crewed

Specifications and Equipment List - Moorings Upgrades In Bold

SALOON/INTERIOR

- Laminate finish with solid wood trims
- Wear resistant simulated wood flooring
- U-shaped settee
- **Saloon table converts to a double berth**
- LED overhead lighting
- LED floor lighting
- Ventilation through forward facing portlights and watertight door
- Stowage space under settee cushions
- Front doorway access to forward cockpit

GALLEY

- Corian® galley worktop surfaces
- Single lever mixer faucet
- Double bowl stainless steel sink
- Dish and cutlery drying recess with drainage and cover
- Vitrefrigo 2-drawer fridge/freezer 56USgal / 212L 12v
- 3-burner gas hob & oven
- Gas solenoid shut-off valve with control at switch panel & warning light at cooker
- Separate garbage bin locker with side & top access
- Stowage space in shelf lockers
- Corian® galley shelf with spice rack
- 4 x Galley drawers
- Pot drawer under oven
- Large overhead storage cabinet

NAVIGATION CONSOLE

- Chart table with overhead LED light
- Instrument and switch panel
- Chart table bench seat with stowage under cushion

CABINS x 4

- Laminate finish with solid wood trims
- Double berths: Forward bunks (56in / 1.42m x 80in / 2.05m)
- Double berths: Aft bunks (59in / 1.50m x 80in / 2.05m)
- Hanging locker with lower shelf
- Bedside storage cubby
- LED overhead lighting and reading lamps
- Overhead roller blinds for privacy in combination with roller bug screens
- Large open shelves
- Stowage drawers under bunk (fwd cabins only)
- Large hull window incorporating portlight and pleated blind
- Double USB sockets
- **Starboard forepeak has berth, head, shower, basin, light & fan (access from deck hatch only)**
- **Port forepeak has single berth, light & fan with access from deck and port forward cabin**

HEAD COMPARTMENTS x 4

- Sliding head door with coat hook
- Washbasin with basin mixer and Corian® worktop
- Vanity locker with mirror
- Towel hook, rail and ring
- Separate shower compartment with door, lever mixer and adjustable shower rose
- Shower sump with push-button drainage
- LED overhead lighting
- Overhead roller blinds for privacy in combination with roller bug screens
- **Electric flushing toilet**

DECK & HULL

- Tek-Dek FLEXI TEEK on forward and aft cockpit and flybridge

- Guardrail (stainless steel) with port & starboard side gates
- 2 x Pushpits
- 2 x Pulpits with seats
- 1500w vertical windlass 10mm chain gypsy with handheld remote
- Anchor bow roller fittings for primary and secondary anchors
- Anchor chain stopper
- 1 x Anchor chain bin
- 1 x Anchor/windlass locker
- 2 x Foredeck lockers
- Lifter locker with convertible fore/aft seat bolster in aft cockpit
- Gas cylinder regulator in dedicated cockpit LPG locker
- Sliding companionway door (2 leaf)
- Hardtop over cockpit complete with LED lighting
- Cockpit table
- Horseshoe buoy with holder
- Folding swim ladder with five teak steps
- Acrylic smoke grey tinted windows
- Side window brows
- Hardtop supports
- 4 x Size 10 flush hatches over heads
- 4 x Size 44 flush hatches over cabins
- 2 x Size 60 flush hatches on foredeck (vented)
- 2 x Size 5 portlights in windscreen
- 10 x Size 1 portlights in hull side and transom
- Forward lounging cockpit with hardtop with watertight saloon access door and sliding hatch for easy foredeck access
- 1 x Forward cockpit locker
- 2 x Seats with stowage locker under in forward cockpit
- Drink holders (4 x in forward cockpit, 2 x in aft cockpit)
- 2 x Coachroof handrails
- 2 x Forward hardtop grab handrails
- 2 x Aft hardtop grab handrails
- 7 x 330mm mooring cleats
- Compass at helm position
- **Custom hydraulic dinghy swim platform**
- **Coach roof side window removeable shade covers**
- **Flybridge enclosure front and sides with aft sunshade curtain**
- **Cockpit side and back curtains**
- **Upholstered fixed stainless steel cockpit stools**
- **Custom sunbed cushions**
- **Forward and aft cockpit fitted cushions**

FLYBRIDGE

- Helmstation console with dedicated chart storage recess
- Staircase from cockpit to flybridge with stainless steel railing and LED courtesy lights
- U-shaped upholstered settee with convertible backrests for forward-facing or aft-facing seating
- Storage under settee
- Sunbed with stainless steel railing at forward end of flybridge coaming
- Access forward to sunbed next to helm
- Lounging settee with backrest and table
- Wetbar unit with sink and faucet and Corian® worktop
- Stowage locker in wetbar
- **Electric grill on flybridge**
- Central fixed cocktail table with drink holder recess
- Guardrail around flybridge (stainless steel)
- Hardtop over flybridge
- Hardtop support arch and forward support posts (stainless steel)
- Overhead LED lights (red and white)
- LED floor lighting
- Drink holders

RUDDER & STEERING SYSTEM

- Balanced spade rudders
- Rudder stock in F16ph stainless steel
- JP3 Self aligning bearings
- Hydraulic steering system with tilting steering wheel
- Soft grip steering wheel
- Stainless steel emergency tiller

ENGINE & CONTROLS

- Double lever throttle / gearshift control
- Sound deadening panels in engine room
- 2 x Engine room ventilation fans and ducting
- **2 x Yanmar BLVA-350HP engines**
- 2 x Propellers - 4-blade fixed
- 2 x Fuel deck fillers
- 2 x Fuel filter / water separators
- 2 x Fuel tanks (composite), total capacity 400USgal / 1,500L
- 2 x Exhaust skin fittings (stainless steel)
- 2 x Exhaust water anti-siphon locks
- 2 x Cooling raw water inlet strainers
- 2 x Exhaust cooling water temperature sensors with audible alarms at helm

ELECTRICAL INSTALLATION

- LED Courtesy lights at stairways
- Bi-color & stern navlights
- 12v DC switch panel
- 3 x 12v Outlet sockets at switch panel, chart table, and at helmstation
- 2 x Fuel tank gauges at helm position
- 2 x Ammeters at helm position
- **2 x AGM 210Ah house batteries**
- **2 x AGM 100Ah engine starter batteries**
- **1 x Additional AGM 210Ah house battery**
- 1 x House battery isolator switch
- 2 x Engine starter battery isolator switches
- 2 x Alternators, standard with engines
- 1 x Electrical spares kit: fuses, relays, fuse holders
- 1 x Electric fog horn with control at helm station
- **Raymarine Instrument Package: Includes Ray55 VHF at Nav Station & additional VHF at helm, C95 Color Chart plotter with converter, p70 color autopilot, i70 color instrument with depth transducer**
- **110v or 220v hard wired shore cable, includes 2 x heavy duty 30amp shore power line, AC switch panel, and AC double outlets in cabin, galley and at switch panel**
- **Microwave oven in galley**
- **Inverter/battery charger 12v - 110v / 2000w**
- **Ventilation fans in saloon (3) and one in each stateroom**
- **Northern Lights 9 kw Genset + battery and fittings**
- **3 x Cruisair Air conditioning, Total 40,000 BTU (2 x 12,000, 1 x 16,000)**
- **23" Flat Screen TV/DVD in Saloon Dual 110v / 220v combo**
- **2 x Solar Panels 70w each fitted to hardtop**
- **4 x Underwater lights (blue) mounted in stern**
- **Fusion 700i Series Marine Stereo in saloon with docking station, includes Bluetooth, USB, & Aux connectivity, 2 x Fusion Marine speakers in saloon, 2 x in aft cockpit & 2 x on flybridge, 2 x in fwd cockpit & Wired remote control at helm station**
- **12v fridge in flybridge wetbar**
- **Rear-view camera with display through MFD at helm**

PLUMBING INSTALLATION

- Hot and cold pressurized fresh water system
- 2 x Water tanks with total capacity 206USgal / 780L
- 1 x 3.5 GPM fresh water pressure pump with 1L accumulator tank
- **2 x Hot water tanks with total capacity 22USgal / 84L**
- **Transom shower with hot and cold water mixer**
- 4 x Shower sump with electric push button drainage
- 2 x Holding tanks, total capacity 45USgal / 170L
- 2 x Electric bilge pumps (keel sump) with float switches and alarm at switch panel
- 2 x Manual bilge pumps (keel sump)
- 2 x High water bilge float switches with alarm at switch panel
- 2 x Electric bilge pumps (engine room) with alert at switch panel
- **1 x Extra water tank 58USgal / 220L**
- **Sea Recovery watermaker 31USgal / 117L per hour**

GENERAL EQUIPMENT

- 6 x Fire extinguishers
- Owner's Operating Manual

- CE Certification
- NMMA Certification

DELIVERY & COMMISSIONING

- **Transport to Cape Town Harbor, launching, commissioning of equipment and sea trials**
- **Antifouling Paint**
- **Delivery from Cape Town to charter port**

SAFETY GEAR

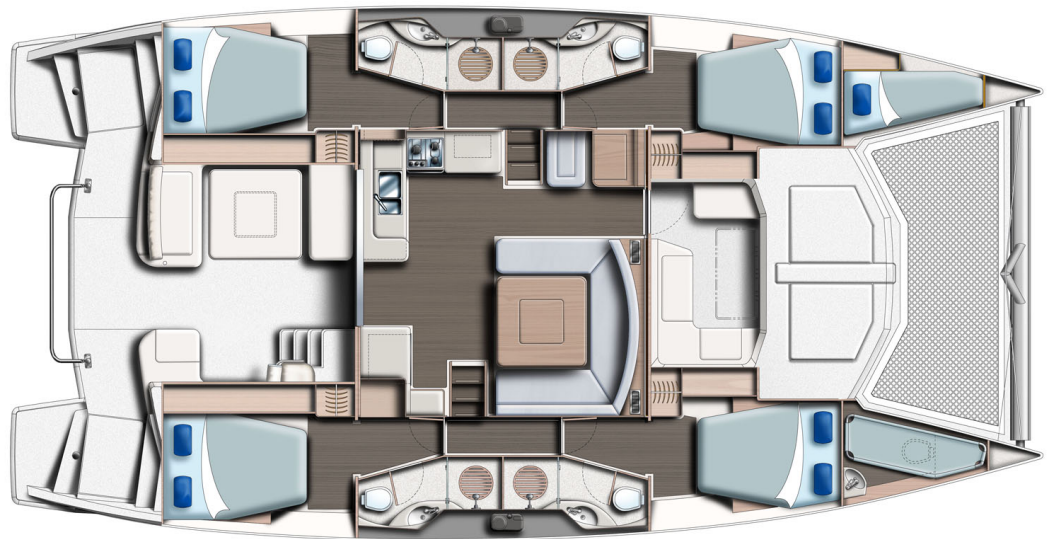
- **55lb (25kg) Delta anchor with 230ft (70m) of chain**
- **35lb (15kg) Britany anchor with 26ft (8m) of chain and 200ft (61m) warp**
- **Anchor bridle, shackles and hook**
- **8 x Fenders**
- **4 x Mooring lines 18mm (70in) x 10m (32ft 10in)**
- **2 x Spring lines 18mm (70in) x 15m (49ft 2in)**
- **12 x Life jackets**
- **Safety harnesses**
- **Bell**
- **Flare Kit**
- **Binoculars**
- **Navigation tools: Parallel rule, compass, dividers**

CRUISING GEAR

- **Plates, cups, saucers, glasses for twelve (12)**
- **Bed linens for twelve (12)**
- **Flatware for twelve (12)**
- **Pots, pans, miscellaneous food prep tools**
- **Cooking and serving utensils**
- **Coffee pot, tea kettle, toaster**
- **Snorkeling gear for twelve (12)**
- **Towels and washcloths for twelve (12)**
- **12ft rigid bottom inflatable with 25HP outboard**
- **Waterskis, kneeboard, tube & life vests**
- **1 x Two person kayak**
- **1 x SUP (stand up paddleboard) and paddle**
- **Fishing tackle**

GENERAL SPECIFICATIONS

Length Overall:	15.54m/51ft 0in
Waterline Length:	14.96m/49ft 1in
Beam:	7.64m/25ft 1in
Draft:	0.98m/3ft 3in
Displacement:	18500kg/40785lb
Fuel Capacity:	1500L/396gal
Water Capacity:	1000L/264gal
Engines:	2 x 350HP



The Builder reserves the right to change or amend the contents of this document at any time without prior notification to any third party, and no liability will be accepted for errors contained within the same.